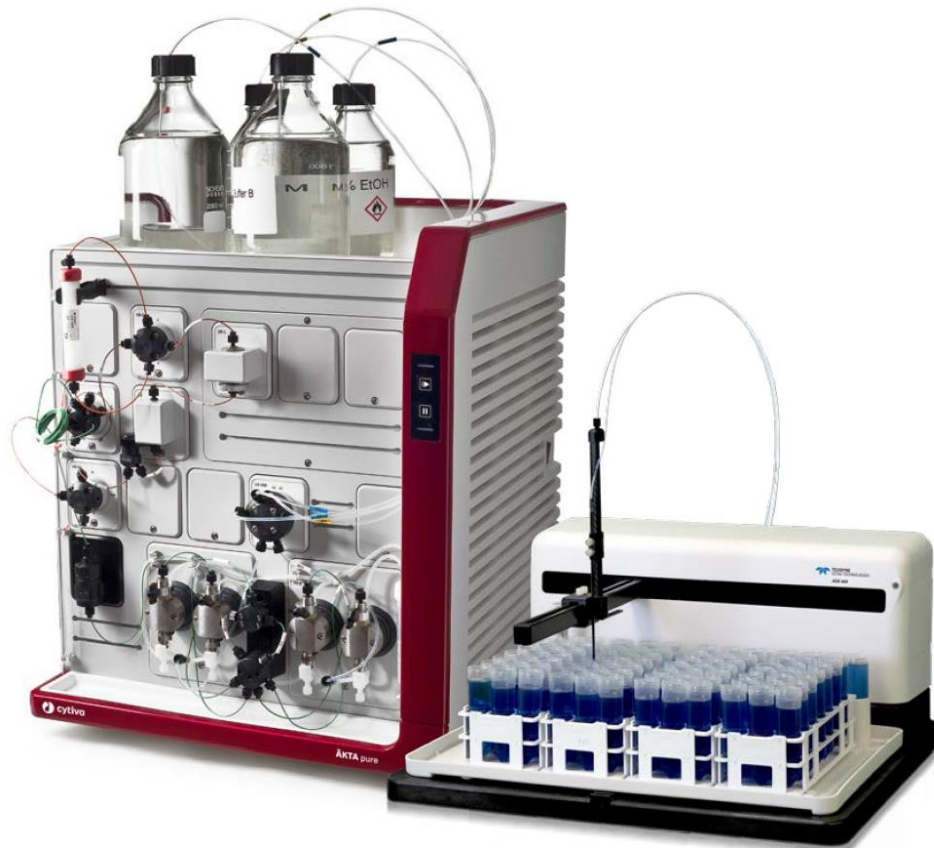


ASX-560 and ASX-280 AUTOSAMPLERS For use with the Cytiva AKTA



ACCESSORIES AND PARTS CATALOG

Catalog part number xxxxxx Rev 01, September 2023

ASX-560 and ASX-280 AUTOSAMPLER ACCESSORIES AND PARTS

Accessories and Supplies



AKTA Pure Upgrade Kit

SP7582

Allows you to configure your existing ASX-560 for use with Cytiva AKTA systems.

Includes I/O card, Communications cable, and AScript software.



Dust Cover Enclosure for ASX-560 and ASX-280

For ASX-560

ENC-99-0010

For ASX-280

ENC-99-0011

ASX-560 Version shown with optional HEPA filter



Enclosure Fan—positive air flow for use with HEPA filter when vent is not available. Provides a flow rate of 121 CFM.

North America

32-0099-045

Europe

32-0100-045

Australia

32-0101-045

ASX-560 and ASX-280 AUTOSAMPLER ACCESSORIES AND PARTS



HEPA Filter

Filter with adapter plate

32-0162-045



Exhaust Flange – 4.0” Diameter

32-0103-045



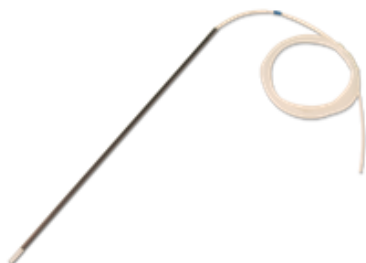
Autosampler Base

For ASX-560 Enclosure

32-0104-045

For ASX-280 Enclosure

32-0105-045



Sample Probes

Length: 10 inches (25.4 cm)

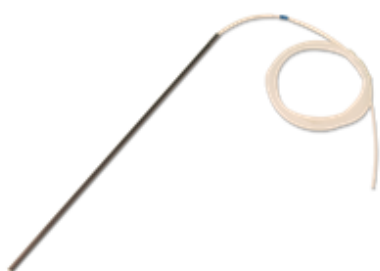
Probe Material: FEP-covered carbon fiber

Capillary Material: PFA

Includes: Probe with attached sample tubing

ID (mm)	Band	Capillary Length	Part Number
0.3	Black	108 in (2.74 m)	SP5799C
0.5	Blue	108 in (2.74 m)	SP5800C
0.8	Red	108 in (2.74 m)	SP5796C
0.9	Yellow	70 in (1.78 m)	SP5950C
1.0	2 Blue	108 in (2.74 m)	SP6013C

ASX-560 and ASX-280 AUTOSAMPLER ACCESSORIES AND PARTS



Drip Resistant Sample Probes

Length: 10 inches (25.4 cm)

Probe Material: Carbon fiber

Capillary Material: PFA

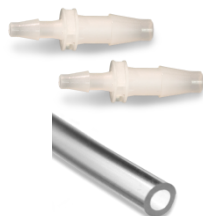
Includes: Probe with attached sample tubing

ID (mm)	Band	Capillary Length	Part Number
0.5	Blue	108 in (2.74 m)	SP5800N
0.8	Red	108 in (2.74 m)	SP5796N
1.0	2 Blue	108 in (2.74 m)	SP6013N



Thumbscrew and O-Ring Kit

SP5919



Rinse/Drain Tubing Hookup Kit

Includes:

1/8" X 3/16" KYNAR® PVDF couplers (qty. 2)

72 in (1.8 m) of 3/16" (4.8 mm) ID tubing

72 in (2.1 m) of 1/8" (3.2 mm) ID tubing

Material	Typical Use	Part Number
Chemical Resistant Tygon® 2375	Aqueous	SP7473



Single Rinse Station

SP7457



Dual Rinse Upgrade Kit

SP7532

(Includes Tygon® tubing kit for gravity drain and pumped drain configurations)

ASX-560 and ASX-280 AUTOSAMPLER ACCESSORIES AND PARTS

Single Channel Peristaltic Pump Tubing Cartridges

For use with pumps that use single channel tubing cartridges (see image on left)



Tubing material is equivalent to the listed brand name but may be produced by other manufacturers.

The interior diameter (ID) of the tubing affects flow rate. A 2 mm tube on the rinse supply channel may be used with a 3 mm tube on the drain channel to ensure that the rinse station never overflows



ID (mm)	Tubing Color	End Plate Color	Part Number
Equivalent to PharMed® material. Applications: Pharmaceutical, Biological, and Food and Beverage			
2	Tan	Black	32-0781-054
3.2	Tan	White	32-0782-054
Equivalent to Tygon® material. Applications: Laboratory Research, Food & Beverage, Biological, Pharmaceutical, Medical Device, Brewery, Consumer Products, Environmental, Raw Milk			
2	Clear	Black	32-0783-054
3.2	Clear	White	32-0784-054

2-Channel Peristaltic Pump Tubing Cartridge

For use with pumps (see image on left) that use 2-channel tubing cartridges



Tubing material is equivalent to the listed brand name but may be produced by other manufacturers.

The interior diameter (ID) of the tubing affects flow rate. A 2 mm tube on the rinse supply channel may be used with a 3 mm tube on the drain channel to ensure that the rinse station never overflows



ID (mm)	Tubing Color	Endplate Color	Part Number
Equivalent to PharMed® material. Applications: Pharmaceutical, Biological, and Food and Beverage			
2, 2	Tan	Black	SP7476
2, 3	Tan	Red	SP7477
3, 3	Tan	White	SP7478
Equivalent to Tygon® material. Applications: Laboratory Research, Food & Beverage, Biological, Pharmaceutical, Medical Device, Brewery, Consumer Products, Environmental, Raw Milk			
2, 2	Clear	Black	SP7479
2, 3	Clear	Red	SP7480
3, 3	Clear	White	SP7481

ASX-560 and ASX-280 AUTOSAMPLER ACCESSORIES AND PARTS



Sample Racks

Vials	Opening	Vial Compatibility	Part Number
90	13.3 mm Round	8 mL round bottom or 7 mL flat bottom	450362
90	13.5 mm Square	8 mL round bottom or 7 mL flat bottom	450055
60	17.0 mm Square	14 mL or 15 mL	450056
40	20.6 mm Square	20 mL	450057
24	25.2 mm Square	30 mL	450058
21	30.5 mm Square	50 mL	450059

Standards Vials

Material for all vials is polypropylene



Vol	Size (mm)	# per kit	Part Number
50 mL	30mm x 115mm	500	SP5178C
		100	SP5178J

Sample Vials

Material for all vials is polypropylene



Vol	Size (mm)	# per kit	Part Number
7 mL	13mm x 82mm (Flat bottom with cap)	1000	SP5178A
		250	SP5178E
8 mL	13mm x 100mm (Round bottom without cap)	1000	SP5178K
		250	SP5178L
14 mL	16mm x 100mm	1000	SP5178B
		250	SP5178F
15 mL	17mm x 100mm	1000	SP5178M
		250	SP5178N
20 mL	21.5mm x 100mm	500	SP5178G
		100	SP5178I
30 mL	25mm x 95mm	500	SP5178H
50 mL	30mm x 115mm	500	SP5178C
		100	SP5178J

ASX-560 and ASX-280 AUTOSAMPLER ACCESSORIES AND PARTS

	Tray Assembly with 10 Standards Positions	SP7439
	Universal 250mL Bottle Rack	32-0748-047
<p>Allows the use of round, square, and rectangular bottles. Can be configured to hold 18 or 21 bottles.</p>		
	Bottle – 250mL (5 per kit)	SP5228
	Waste Bottle – 1 Liter	SP8322
	Waste Bottle – 2 Liter	SP5510
	Waste Bottle – 15 Liter Carboy with Handles	SP8320

ASX-560 and ASX-280 AUTOSAMPLER ACCESSORIES AND PARTS

	USB Cable (3 Meters)	SP6375												
	RS-232 interface cable (3 Meters) (Female/Female)	SP7441												
	Power Cords													
<table border="1"> <thead> <tr> <th data-bbox="673 724 1015 766">Where Used</th> <th data-bbox="1015 724 1315 766">Description</th> <th data-bbox="1315 724 1508 766">Part Number</th> </tr> </thead> <tbody> <tr> <td data-bbox="673 766 1015 892">USA, Canada, Japan, Mexico</td> <td data-bbox="1015 766 1315 892">Type B NEMA 5-15 IEC 60906-2 100-127 V</td> <td data-bbox="1315 766 1508 892">SP5003</td> </tr> <tr> <td data-bbox="673 892 1015 997">Europe, Russia</td> <td data-bbox="1015 892 1315 997">Type F CEE 7/7 220-240 V</td> <td data-bbox="1315 892 1508 997">SP5004</td> </tr> <tr> <td data-bbox="673 997 1015 1123">UK, Ireland</td> <td data-bbox="1015 997 1315 1123">Type G BS 1363 220-240 V</td> <td data-bbox="1315 997 1508 1123">SP5005</td> </tr> </tbody> </table>			Where Used	Description	Part Number	USA, Canada, Japan, Mexico	Type B NEMA 5-15 IEC 60906-2 100-127 V	SP5003	Europe, Russia	Type F CEE 7/7 220-240 V	SP5004	UK, Ireland	Type G BS 1363 220-240 V	SP5005
Where Used	Description	Part Number												
USA, Canada, Japan, Mexico	Type B NEMA 5-15 IEC 60906-2 100-127 V	SP5003												
Europe, Russia	Type F CEE 7/7 220-240 V	SP5004												
UK, Ireland	Type G BS 1363 220-240 V	SP5005												
	24-Volt Power Supply	SP7654												

ASX-560 and ASX-280 AUTOSAMPLER ACCESSORIES AND PARTS

Repair Parts



Main Board

SP7452



I/O board With Gender Changer

SP7530



Z-Axis Drive Assembly

SP7437

Includes:
Crash block with mounting kit and adhesive



Z-Axis Tubing Replacement Kit (PEEK Anti-Kink)

SP7174



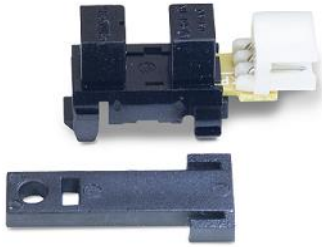
Y-Axis Home Flag

SP7459

ASX-560 and ASX-280 AUTOSAMPLER ACCESSORIES AND PARTS

X, Y, Z Sensor

32-0967-044



Z-Drive Cable Attachment Kit
for Z-drives with molded rotor/stator

SP7662



Z-Axis Stepper Motor

SP7447



X-Axis Stepper Motor

SP7445



Y-Axis Stepper Motor

SP7446



ASX-560 and ASX-280 AUTOSAMPLER ACCESSORIES AND PARTS

	<p>Y Arm Tube Assembly</p>	<p>SP7448</p>
	<p>Y-Axis Lead Screw Kit</p>	<p>SP7449</p>
	<p>X-Axis Lead Screw Kit</p> <p>For ASX-560</p> <p>For ASX-280</p>	<p>SP7450</p> <p>SP7522</p>
	<p>X-Axis Lead Screw Bearings</p>	<p>SP6239</p>
	<p>Guide Shaft Kit</p> <p>For ASX-560</p> <p>For ASX-280</p>	<p>SP7451</p> <p>SP7451</p> <p>SP7523</p>

ASX-560 and ASX-280 AUTOSAMPLER ACCESSORIES AND PARTS

Bearing ½" ID (Set of 2)

SP7453

Linear bearings which travel along the guide shaft



X-Axis Drive Belt

SP5222



Front Cover

Gray Color with Teledyne CETAC logo

For ASX-560

SP7455

For ASX-280

SP7525



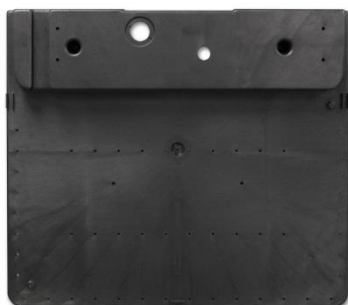
Base Plate

For ASX-560

SP7456

For ASX-280

SP7526



ASX-560 and ASX-280 AUTOSAMPLER ACCESSORIES AND PARTS



Pump Motor kit

32-0851-044

2 Channel

Uses single channel tubing cartridges
(one per channel)



Tubing clip

32-0848-020

Used with single channel tubing cartridges

ASX-560 and ASX-280 AUTOSAMPLER ACCESSORIES AND PARTS

Ordering

To order, contact:

Phone (Toll-Free, USA): 800-369-2822
Phone (Outside USA): +1-402-733-2829
e-mail: cetacsales@teledyne.com
www.teledynecetac.com

Teledyne CETAC Technologies
14306 Industrial Road
Omaha, Nebraska 68144, USA

For questions about service and repair, call us at the numbers above or e-mail
cetacservice@teledyne.com

Trademark Acknowledgements: PharMed and Tygon are registered trademarks of Saint-Gobain Performance Plastics. Viton® is a registered trademark of E.I. du Pont de Nemours and Company. Superthane is a registered trademark of NewAge Industries, Inc. KYNAR® is a registered trademark of Arkema Inc.