

ASX-1400 and ASX-1600 RANDOM ACCESS AUTOSAMPLER



ACCESSORIES AND PARTS CATALOG

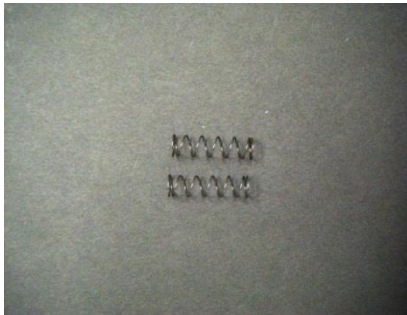
Catalog part number 620081 Rev 3, September 2020

Accessories and Supplies



Z-Axis Drive Assembly

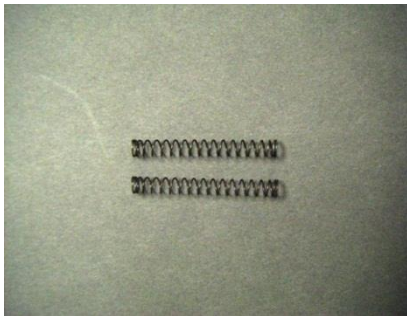
SP6212



Spring Kit – Drip Cup Assembly
0.240" x 0.88" 2/kit

SP6302

For SN < 100806A1400



Spring Kit – Drip Cup Assembly
0.180" x 1.50" 2/kit

SP6433

For SN > 100806A1400



Drip Cup

SP6214



Sample probe/Stirrer holder

Holder for 60 Position, Gilson Rack Number 29

SP6215

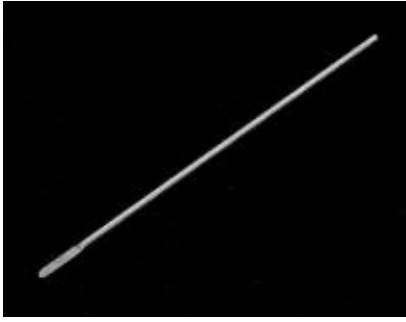
Holder for 60/80 Position Rack

SP6215A

Holder for 90 Position Rack

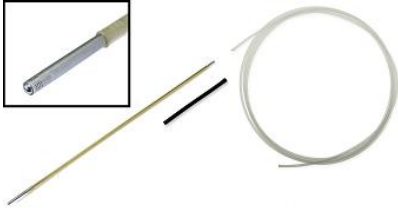
SP6215B

ASX-1400 & ASX-1600 AUTOSAMPLER ACCESSORIES AND PARTS



Stirrer-6.5 inches long

SP6217



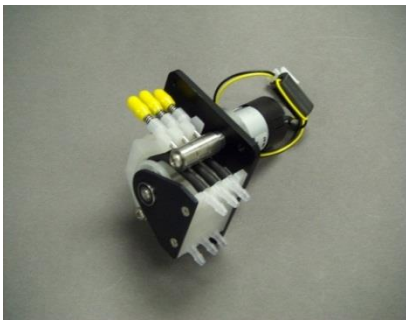
Stainless Steel Sample probe with Filtered tip
(Used in Oil analysis)

SP7604



Pump Motor Kit (Main)
2-Channel

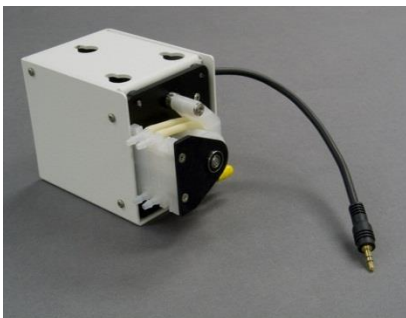
SP7002A



Pump Motor Kit (Main)
3-Channel

SP6396

Note: 3-Channel pump does not require the
2-Channel Auxiliary pump



Pump motor (Auxiliary)
2-Channel

SP6219A

Note: Not needed with 3-Channel Main pump

ASX-1400 & ASX-1600 AUTOSAMPLER ACCESSORIES AND PARTS



Stirrer Motor assembly

SP6216



Retaining rings for stirrer motor

SP6348



28-Volt Power Supply

SP7020



Carriage – Stepper Ribbon Cable

(ASX-1400)

SP6220

(ASX-1600)

SP6262



Stirrer, Z-Axis interface cable

SP6221

ASX-1400 & ASX-1600 AUTOSAMPLER ACCESSORIES AND PARTS



RS-232 interface cable (Female/Female)

SP5341



USB cable (3 Meters)

SP6375



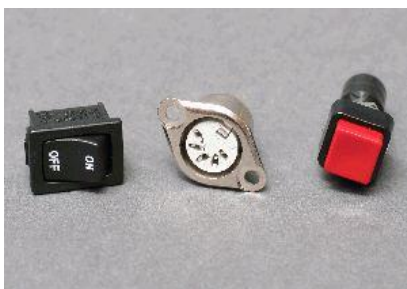
GPIB interface box

SP7084



Z-drive 15 pin cable

SP6222



Switch / Power Input (5 pin input)

SP7028

ASX-1400 & ASX-1600 AUTOSAMPLER ACCESSORIES AND PARTS



CPU Board (Rabbit)

(ASX-1400)Standard

SP6223

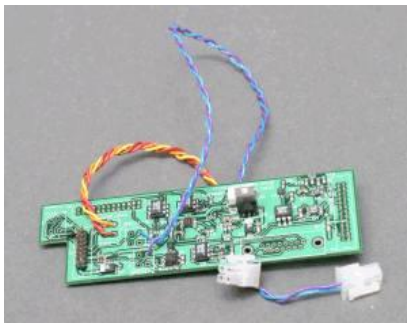
(ASX-1600)Standard

SP6365



Main Board (Conformal Coated)

SP6227



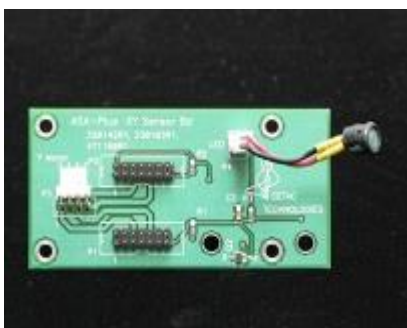
Stirrer, Z axis board

SP6228



Aux X-Axis sensor board

SP6229



X/Y Sensor board

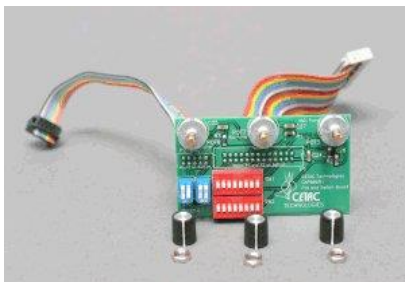
SP6230

ASX-1400 & ASX-1600 AUTOSAMPLER ACCESSORIES AND PARTS



X/Y Interface board

SP6224



Potentiometer & DIP switch board assembly with cables

SP6225



Auxiliary pump cable

SP6226



X-Axis Stepper Motor

SP6231



Y-Axis Stepper Motor

SP6232

ASX-1400 & ASX-1600 AUTOSAMPLER ACCESSORIES AND PARTS



Arm Assembly (includes lead screw, y-axis motor and sensor board)

SP6233



Y-Axis Lead Screw Kit

SP6236



X-Axis Lead Screw Kit

(ASX-1400)

SP6237

(ASX-1600)

SP6265



Guide Shaft

(ASX-1400)

SP6238

(ASX-1600)

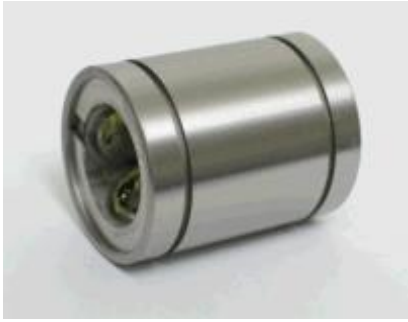
SP6266



Bearing, 7/8" x 3/8"

SP6239

ASX-1400 & ASX-1600 AUTOSAMPLER ACCESSORIES AND PARTS



Bearing 3/4" ID

SP6240



X-Axis Drive Belt

SP5222



Xpress Rinse Stations for ASX-1400/1600 Autosamplers

Material: UHMW polyethylene
Includes screws and mounting plate
Version depends on the sample rack:

Gilson 60-position racks (0.578" spacing)	SP6597
Cetac and Bel-Art 90/96-pos racks (0.622" spacing)	SP6598
Bohdan 80-pos and Bel-Art 60-pos racks (0.800" spacing)	SP6599
ASX-1600 Rinse Station for Cetac and Bel-Art 90/96 pos racks (0.622" spacing)	SP6668



Other ASX-1400/1600 Rinse Stations

(ASX-1400) Multi Rack Rinse Station	SP6437
(ASX-1600) with Bohdan 80 pos and Bel Art 60 pos racks (0.800" spacing)	SP6667

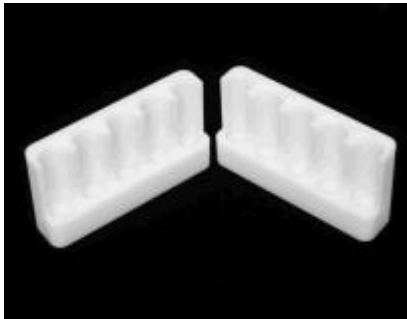
ASX-1400 & ASX-1600 AUTOSAMPLER ACCESSORIES AND PARTS



Stirrer Blocks for ASX-1400/1600 Autosamplers

Version depends on the sample rack:

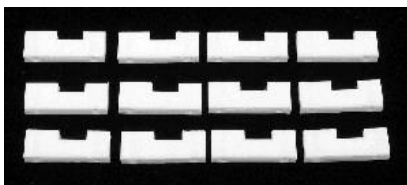
Gilson 60-position racks (0.578" spacing)	SP6600
Cetac and Bel-Art 90/96-pos racks (0.622" spacing)	SP6601
Bohdan 80-pos and Bel-Art 60-pos racks (0.800" spacing)	SP6602



5 Position Standards Rack (Set of 2) SP6242



Alignment Tool Kit SP6244



Rack Adapters for Gilson Racks (ASX-1400 Only) SP6248



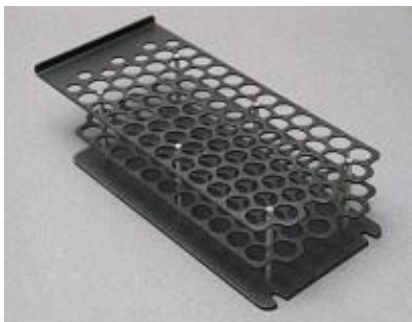
Rack Adapter for 80 Position Rack (ASX-1400 Only) SP6249

ASX-1400 & ASX-1600 AUTOSAMPLER ACCESSORIES AND PARTS



Rack Adapter for Cetac Bel-Art Racks and 90
Position Oils Racks
(ASX-1400 Only)

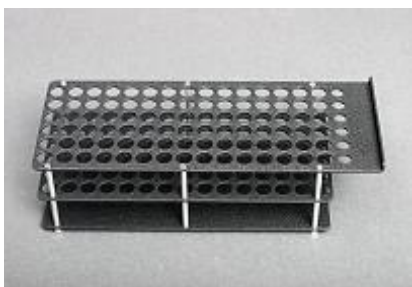
SP6250



80 Position/15mL Sample Rack
(Used in Oil industry)

SP7007

(ASX-1400 Only)



90 Position/13mm Sample Rack

SP6255

96 Position/13mm Sample Rack

SP6413

(Used in Oil Industry)

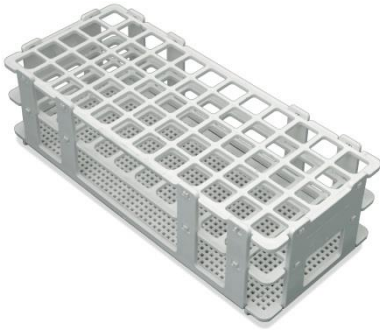


Gilson Number 29 Rack

SP6243

ASX-1400 & ASX-1600 AUTOSAMPLER ACCESSORIES AND PARTS

Sample Racks



Vials	Opening	Vial Compatibility	Part Number
90	13.3 mm Round	8 mL round bottom or 7 mL flat bottom	450362
90	13.5 mm Square	8 mL round bottom or 7 mL flat bottom	450055
60	17.0 mm Square	14 mL or 15 mL	450056
40	20.6 mm Square	20 mL	450057
24	25.2 mm Square	30 mL	450058
21	30.5 mm Square	50 mL	450059

Vials

Material for all vials is polypropylene



Vol	Size (mm)	# per kit	Part Number
7 mL	13mm x 82mm (Flat bottom with cap)	1000	SP5178A
		250	SP5178E
8 mL	13mm x 100mm (Round bottom without cap)	1000	SP5178K
		250	SP5178L
14 mL	16mm x 100mm	1000	SP5178B
		250	SP5178F
15 mL	17mm x 100mm	1000	SP5178M
		250	SP5178N
20 mL	21.5mm x 100mm	500	SP5178G
		100	SP5178I
30 mL	25mm x 95mm	500	SP5178H
50 mL	30mm x 115mm	500	SP5178C
		100	SP5178J

ASX-1400 & ASX-1600 AUTOSAMPLER ACCESSORIES AND PARTS



Rinse/Drain Tubing Hookup Kit (Tygon)

7 foot piece of 1/8" ID (2/kit)

SP6251

6 foot piece of 3/16" ID (2/kit)

SP6252



Rinse/Drain Tubing Hookup Kit
(Fuel and Lubricant tubing) Used in the oil
Industry

7 foot piece of 1/8" ID (2/kit)

SP6253

6 foot piece of 3/16" ID (2/kit)

SP6254



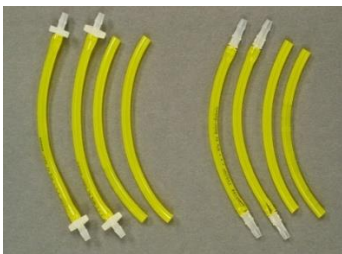
Rinse/Drain Tubing Hookup Kit
(Superthane) Used in the oil Industry

7 foot piece of 1/8" ID (2/kit)

SP6431

6 foot piece of 3/16" ID (2/kit)

SP6432



Drain Pump Tubing and Connector Kit
(Fuel and Lubricant) Used in the oil Industry

SP6191

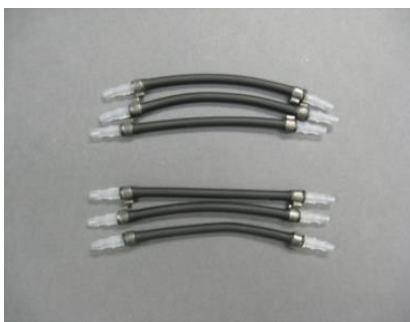
ASX-1400 & ASX-1600 AUTOSAMPLER ACCESSORIES AND PARTS



Drain Pump Tubing and Connector Kit (PharMed) SP6089



Drain Pump Tubing and Connector Kit (Tygon) SP6090



Drain Pump Tubing and Connector Kit (Viton) SP6430



Drain Pump Tubing and Connector Kit (Viton)
With Y Splitters (Superthane) SP6439

ASX-1400 & ASX-1600 AUTOSAMPLER ACCESSORIES AND PARTS

Ordering

To order, contact:

Phone (Toll-Free, USA): 800-369-2822
Phone (Outside USA): +1-402-733-2829
Fax: +1-402-733-5292
e-mail: cetacsales@teledyne.com
www.teledynecetac.com

Teledyne CETAC Technologies
14306 Industrial Road
Omaha, Nebraska 68144, USA

For questions about service and repair, call us at the numbers above or e-mail
cetacservice@teledyne.com

Trademark Acknowledgements: PharMed and Tygon are registered trademarks of Saint-Gobain Performance Plastics. Viton® is a registered trademark of E.I. du Pont de Nemours and Company. Superthane is a registered trademark of NewAge Industries, Inc.