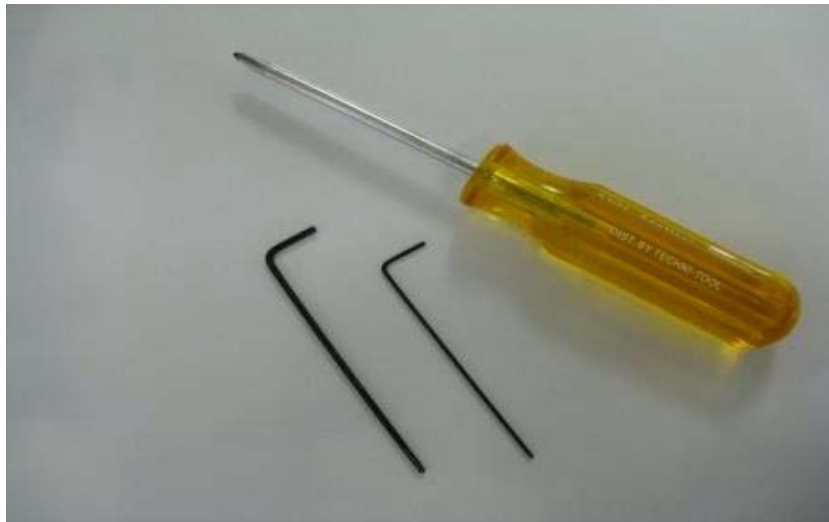




Replacing the M6100 Lamp Housing Assembly

Tools needed to complete this procedure.

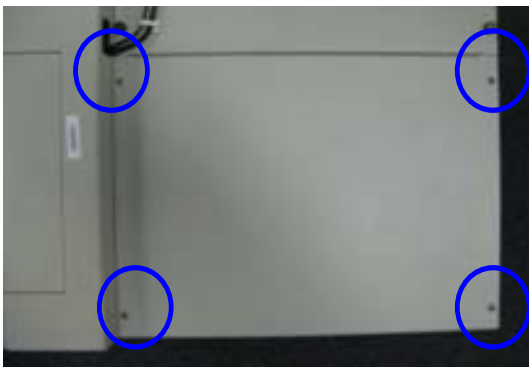


3/32 hex wrench, .050 hex wrench, Phillips screwdriver

1. First ensure the software is closed and the power to the system has been disconnected.
2. Remove the autosampler from on top of the unit and set aside.

Note: If it's necessary to disconnect the cabling from the autosampler, label and/or make note of the connections.

3. Remove the four screws on the top cover and the two on the right side to gain access to the electronics.

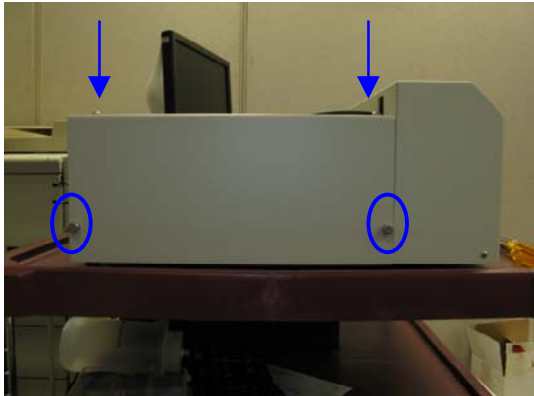


Top view



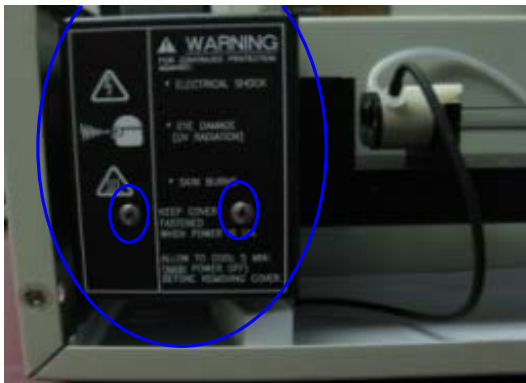
Right side view

5. Loosen the two thumbscrews on the left side panel and the two on top of that panel.



Thumbscrews

6. Remove the two screws holding the black lamp shield, near the back of the instrument, to expose the lamp housing assembly.

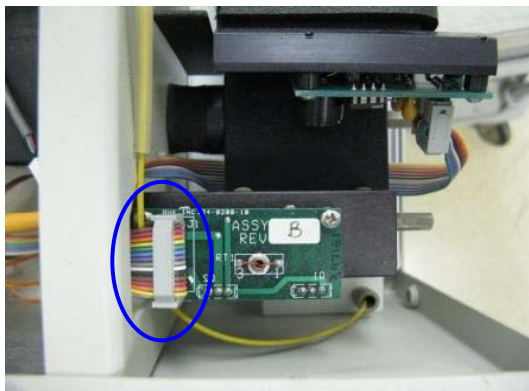


Shield and screws

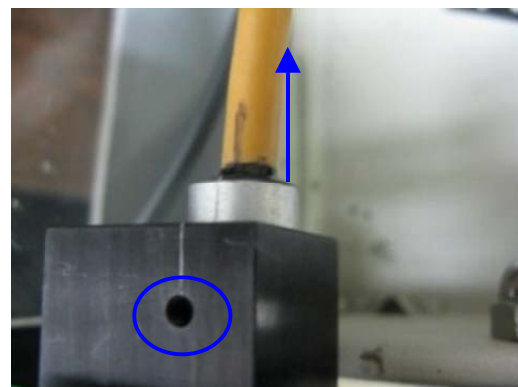


Lamp housing assembly(top view)

7. Carefully remove the ribbon cable connector from the assembly, loosen the recessed setscrew and remove the lamp from the assembly.

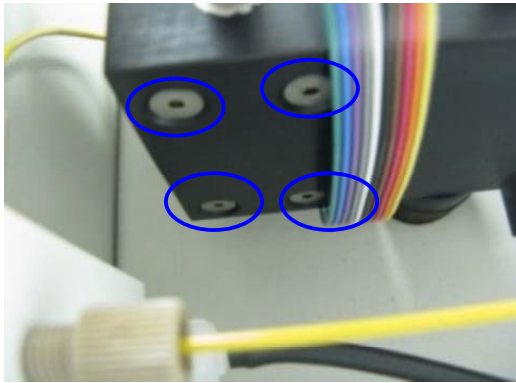


Ribbon cable connector



Setscrew

8. Remove the four mounting screws under the rail to dismount the assembly.



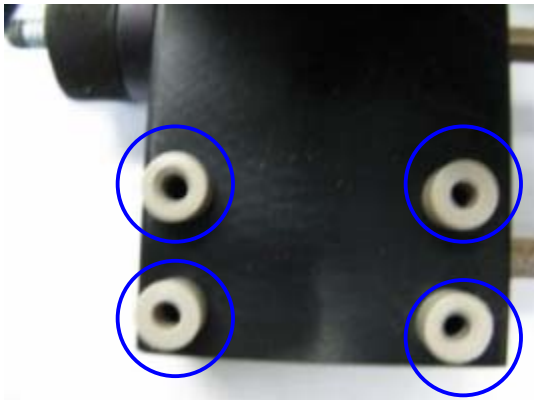
Mounting screws



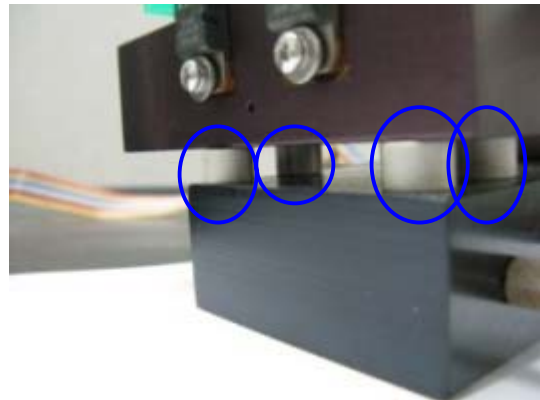
Dismounted assembly

9. Mount the new assembly to the rail.

NOTE: When replacing the assembly, ensure the standoffs are in place between the assembly and the rail.



Standoffs(top view)



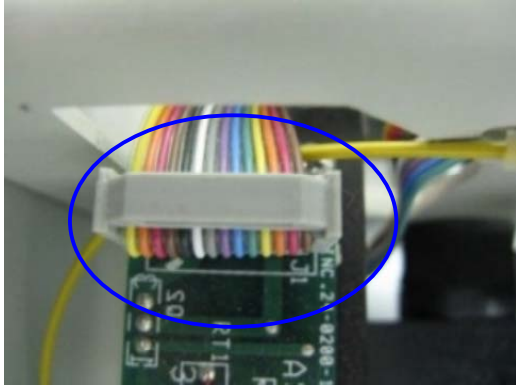
**Standoffs
(sideview, assembly mounted)**

10. Reinsert the lamp into the housing, lining up the mark on the lamp with the scribe on the lamp housing. Tighten the setscrew.



Scribe and Mark

11. Connect the ribbon cable to the new assembly. Ensure the correct orientation.



Ribbon cable orientation

12. Double-check connections and test by applying power and going into the software before closing the case. Operate normally.

Note: The assembly should come up to temperature in approximately five minutes.