



Replacing the M6100 EOFM Board

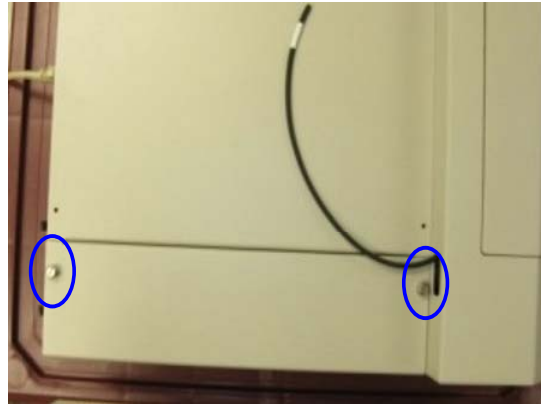
1. First ensure the software is closed and the power to the system has been disconnected.
2. Remove the autosampler from on top of the unit and set aside.

Note: If it's necessary to disconnect the cabling from the autosampler, label and/or make note of the connections.

3. Loosen the two thumbscrews on the left side panel and the two on top of that panel.



Thumbscrews(side)



Thumbscrews(top)

4. Remove the two screws holding the black lamp shield, near the back of the instrument, to expose the lamp and the EOFM board.



Lamp shield



EOFM board on mount

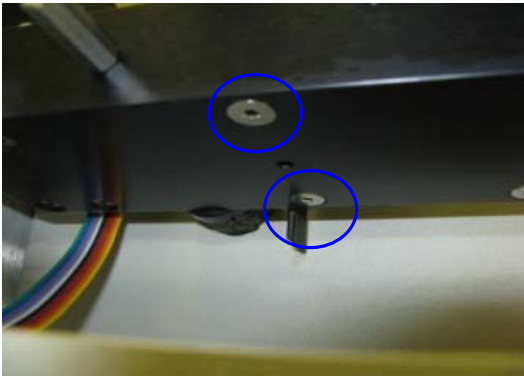
- Carefully remove the ribbon cable by pulling the connector from the board.



Ribbon cable connection

- Remove the EOFM/Focal lens assembly by removing their two screws on the bottom of the optical rail and place it on the back of the focal lens block on Kimwipes or a lint free cloth.

NOTE: Take care not to touch any of the optical components.



Mounting screws



EOFM/Focal lens assembly

- Locate and remove the four screws holding the EOFM board on it's mount. Replace the old board with new one ensuring the black standoffs remain in place between the board and the mount.



Board mounting screws

8. Remount EOFM/Focal lens assembly to the optical rail.
9. Connect the ribbon cable to the EOFM board ensuring the green wire is on top as pictured.



Ribbon cable orientation

10. Replace black lamp shield and reconnect power.

NOTE: Shield eyes from the light of the UV lamp.

11. Turn on instrument and allow instrument to warm up for approximately one minute. The over-range light should go off.

