
**Guide to Using the Z-Drive Speed
Override Tool for ASX-520HS
Autosamplers**

This guide describes the CETAC Z-drive Speed Override tool for ASX-520HS autosamplers. This is a Windows program that should run under Windows 98/NT 4/2000 & XP. It requires firmware version 1.03 or greater.

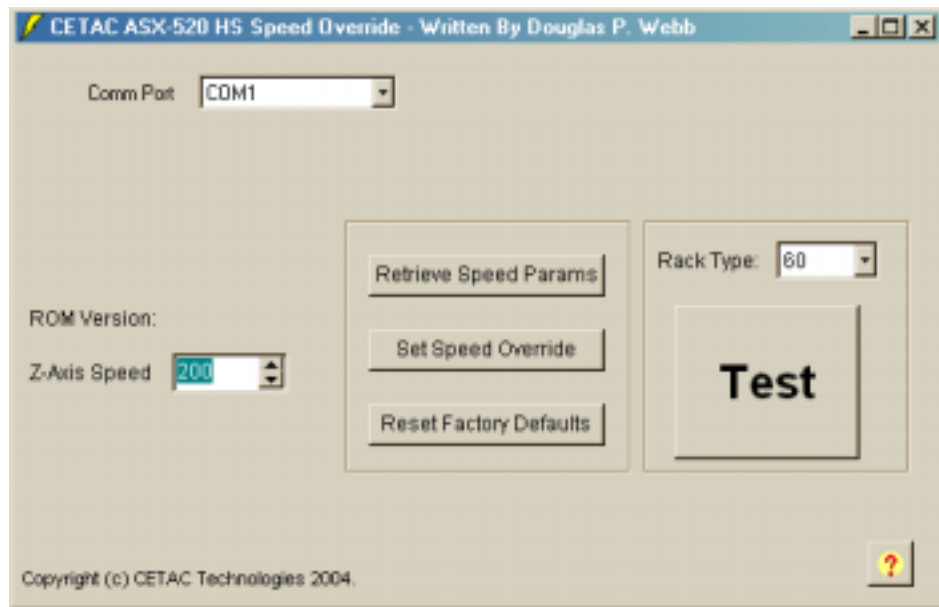


Figure 1. Z-drive Speed Override tool

- 1 Select the COM port that the autosampler is using.
- 2 Press the "Retrieve Speed Params" button to make sure that the autosampler is functioning correctly and retrieve the current speed parameter(s).
- 3 Use the spin control to specify the desired top speed. For the Z-Axis speed, smaller numbers are faster (100 is VERY fast) and bigger numbers are slower. Some values may generate a harmonic in the motor and cause many vibrations. Generally, high level of vibration is to be avoided.
- 4 Click the "Set Speed Override" button to override the default speed parameters(s).
- 5 After specifying the tray type. Click the "Test" button to see the autosampler in action using the currently specified speed parameters – it runs the sampler between the back-left and front-right corners.

NOTE: "Reset Factory Defaults" will restore the speed parameter(s) to the default factory setting. Powering up the autosampler with both DIP 3 & 4 in the ON (down) position will also reset to factory default even if the system fails to BOOT properly. (After which DIP 3 & 4 should be reset to the desired speed and the power cycled – wait 5 seconds with the power off.)