

---

---

**Alignment Procedure for  
ASX-500/510/520**

1. Ensure power to instrument is off. Make sure that you have a sample probe in the Z-drive, and racks on the right and left of the tray. As shown in figure 1-1. There is no need for racks in the 2 middle sections of the tray.



Figure 1-1

2. Move the back of the unit to the edge of the table or cart (**make sure that you have someone hold the tray section (as shown in figure 1-2) so that the autosampler will not fall**) because the back that is hanging of the edge of the table or cart is heavy.

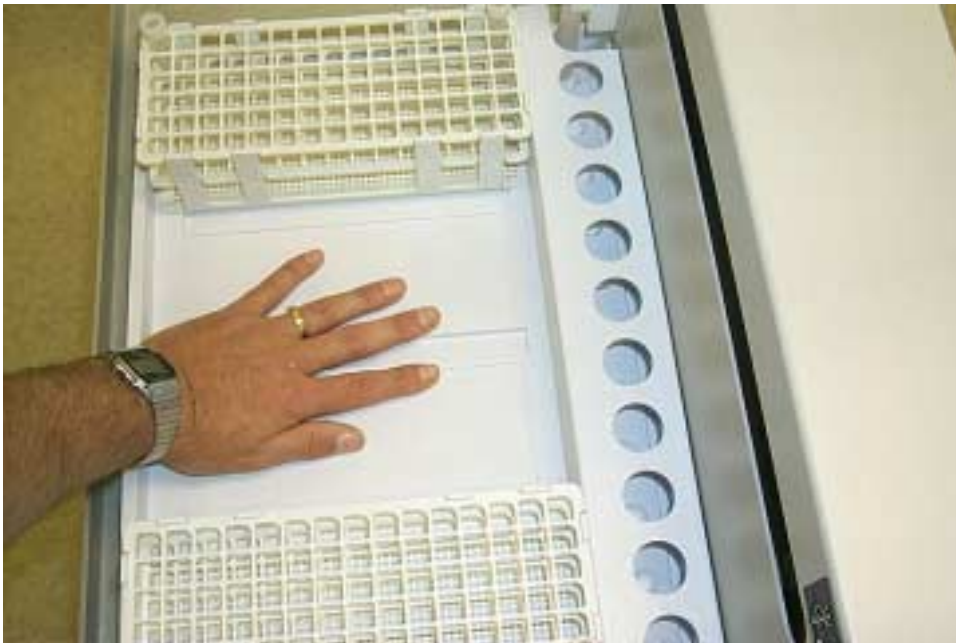


Figure 1-2

3. With the back of the autosampler off the edge of the table or cart. Locate the 4 cap screws located under the bottom of the autosampler. As shown in figure 1-3.(only one side is shown in picture)



**Figure 1-3**

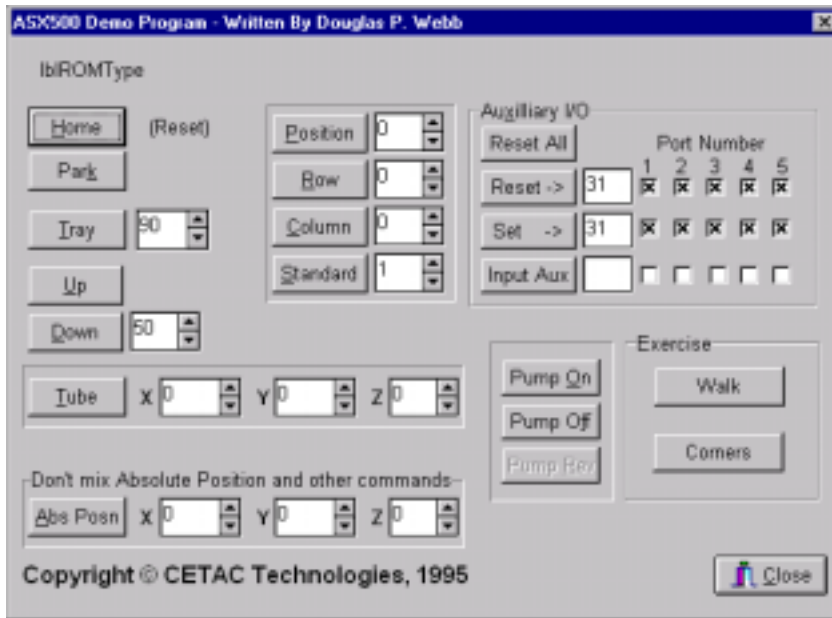
4. Notice the holes in the bottom of the tray, these are for access to the 4 cap screws. Using a long 5/32 allen wrench, loosen the 4 screws slightly so that you can move the body of the auto sampler left, right, front, and back. As shown in figure 1-4.



**Figure 1-4**

5. Connect communication cable from the computer to **COM 1** on the back of the autosampler.
6. Turn on the autosampler. It should home x, y, and z-axis.

- Now open the program that you downloaded off the website. It will open a **tcomm debug** window, then soon after will open the main window as shown in figure 1-5.



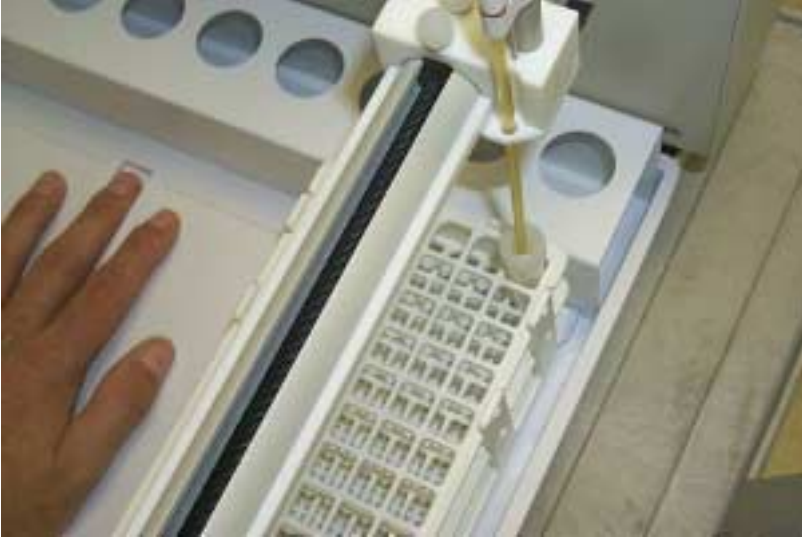
**Figure 1-5**

- In the top left hand corner of the main window it should tell you what version of e-prom is in your autosampler.
- Click the **Home** button and unit should act just as it did when you turned it on.
- The # next to **Tray** is the # of tubes in a rack, please enter that # now.
- The number next to **Down** is the depth that the Z-drive travels. Click the arrow till the number reads 150 for a normal z-drive and 100 for a nicolet z-drive.
- Now under the **Exercise** window click **Corners**.
- When the autosampler gets to the first tube and z-drive is down turn autosampler off. Align the sample probe so it is in the middle of the test tube.as shown in figure 1-6. Tighten the cap screws slightly on that side.



**Figure 1-6**

14. Turn autosampler back on and when the sample probe gets to the next tube, do the same as you did on the first tube. Turn unit off align and tighten screw. As shown in figure 1-7.



**Figure 1-7**

15. Turn unit back on and let unit run through all the 4 corners.
16. If the alignment is off slightly when it hits the 2 tubes in the front of the tray, then split the difference between the back tubes and the front tubes.
17. If satisfied with the alignment, then tighten all 4 cap screws as tight as possible.
18. Click the close button on the software before turning off the autosampler for the final time, or you may get an error message.
19. At this time the autosampler should be aligned and ready for your application.