
**Firmware Change
Procedure for ASX-100**

FIRMWARE CHANGE PROCEDURE FOR ASX-100

Note:

MAKE SURE THE UNIT IS UNPLUGGED AND IN THE "OFF" POSITION BEFORE BEGINNING THIS PROCEDURE.

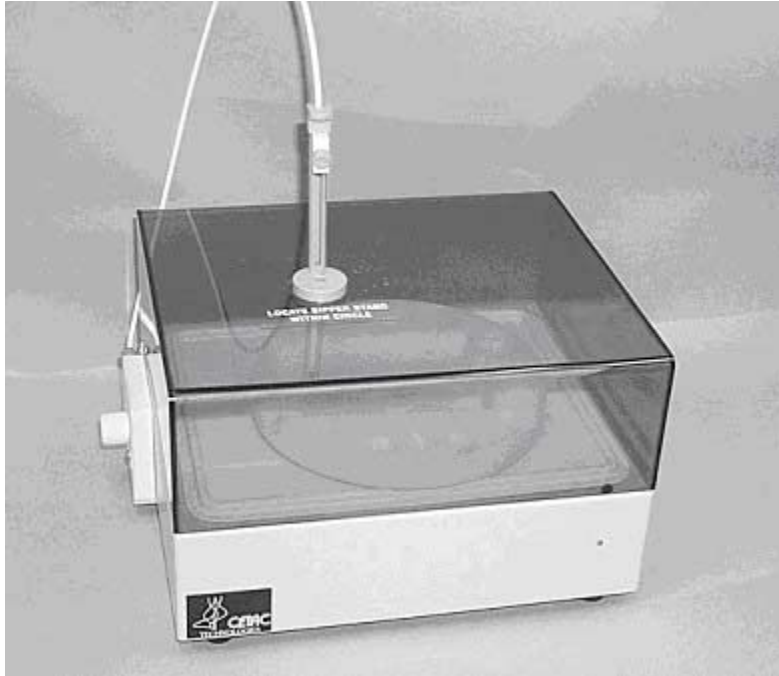
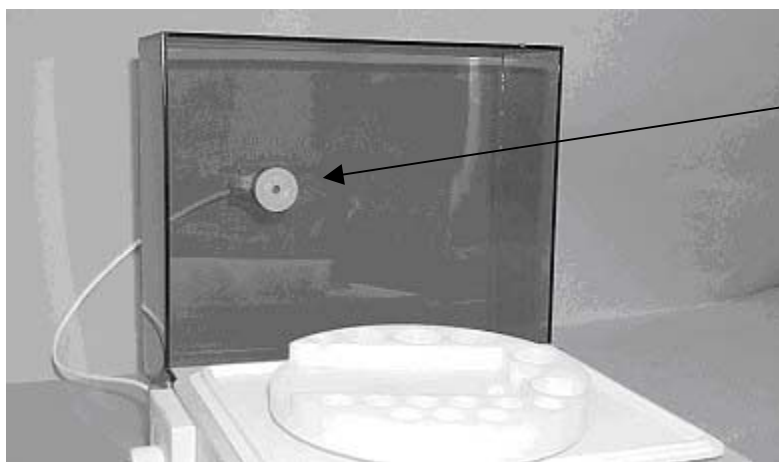


Figure 1-1. Front view of ASX-100.

1. First, open top cover and remove the sample probe assembly by unscrewing bottom nut. See Figure 1-2.



Z-Drive Assembly Locking Nut

Figure 1-2. View of bottom cover showing locking nut of sample probe.

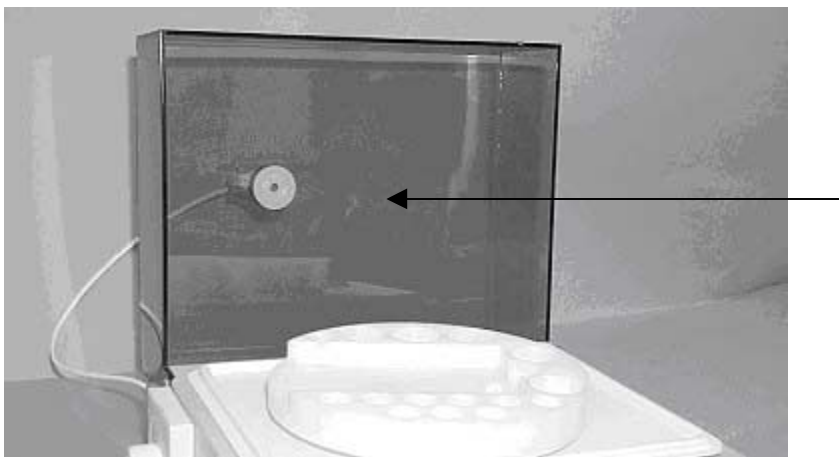


Figure 1-3. View of rotary tray.

2. Next, remove the position rack to get access to the plastic screw that is located in the middle of the rotary tray holder. See Figure 1-3.
3. After the rotary tray is removed, the unit needs to be tilted on its side to gain access to the bottom screws. Remove the four outer corner screws and loosen the two back screws. See Figure 1-4.

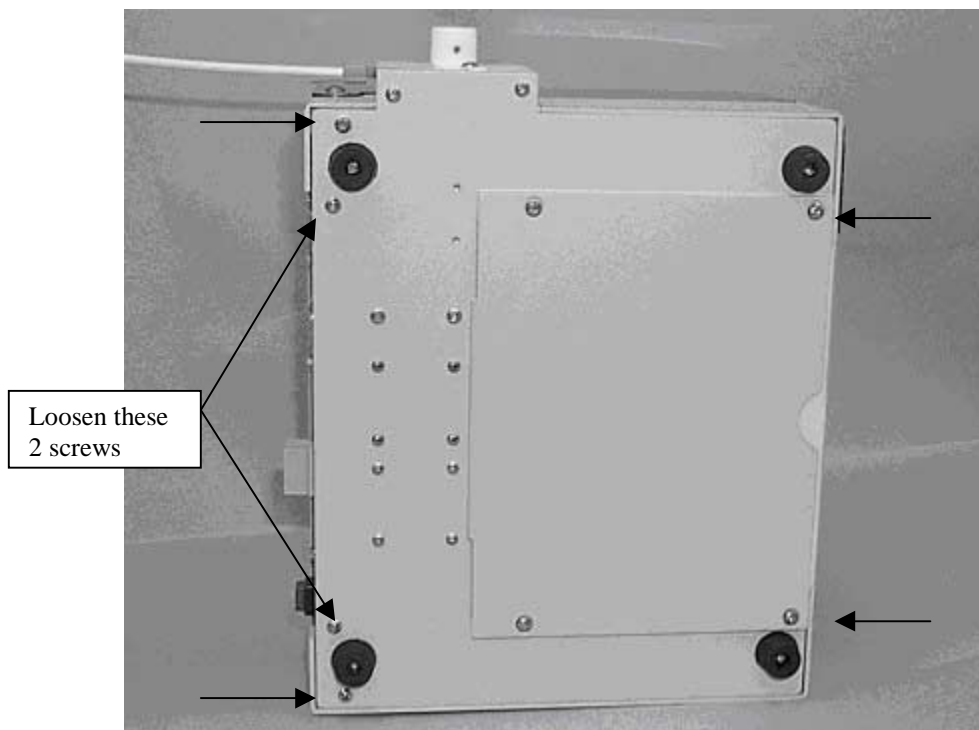


Figure 1-4. Bottom view of ASX-100.



Figure 1-5. View of ASX-100 with rotary tray removed.

4. Make sure the key on top of the rotary arm is in the far right position. See Figure 1-5.
5. Lift up on the back of the unit while pulling it forward slightly to remove top hood. See Figure 1-6.

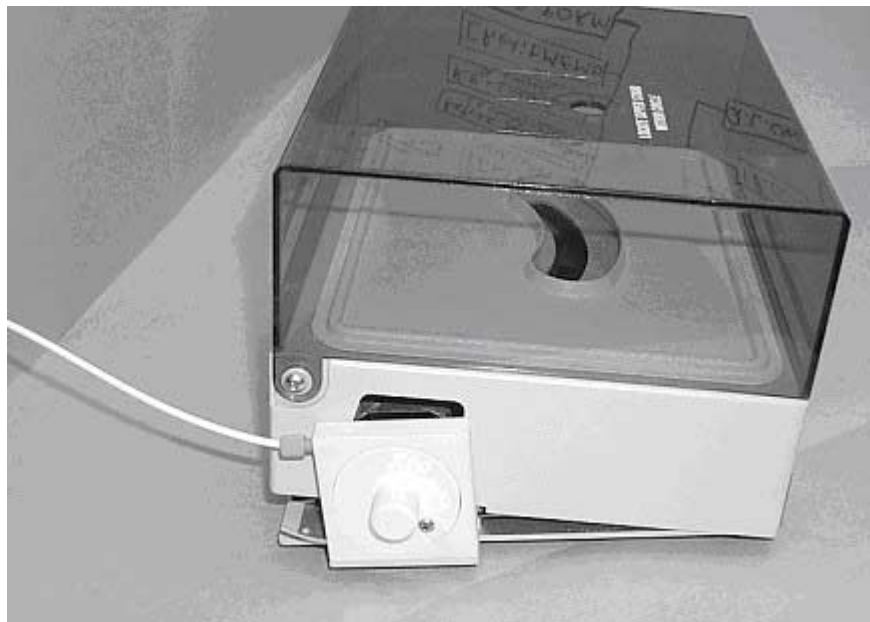


Figure 1-6. View of the back of the unit partially removed.

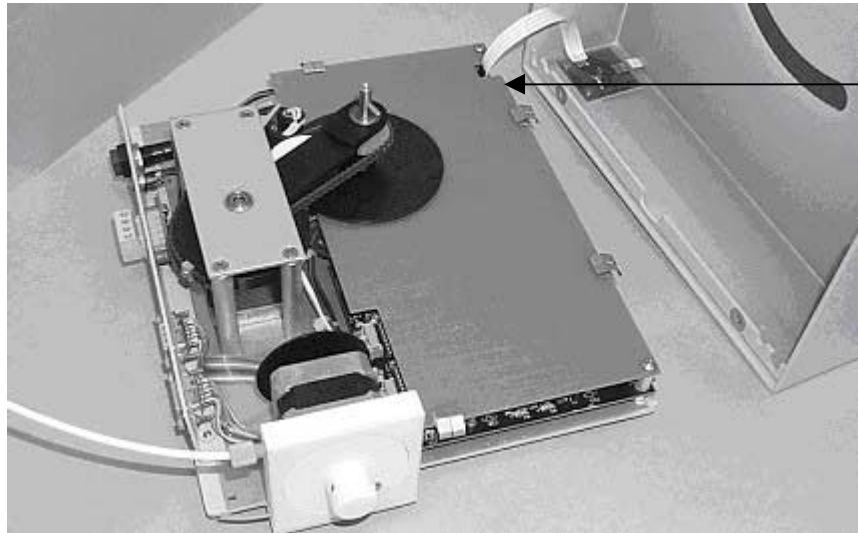


Figure 1-7. Inside view of ASX-100 Auto-Sampler .

6. After the top hood is removed then the ribbon cable needs to be unplugged. Figure 1-7.

Note:

Make sure that the position of the ribbon cable is observed when removing. It needs to be reattached in the same position that it was removed.

7. Next, the inner shield needs to be removed by removing the four corner screws. See Figure 1-8.

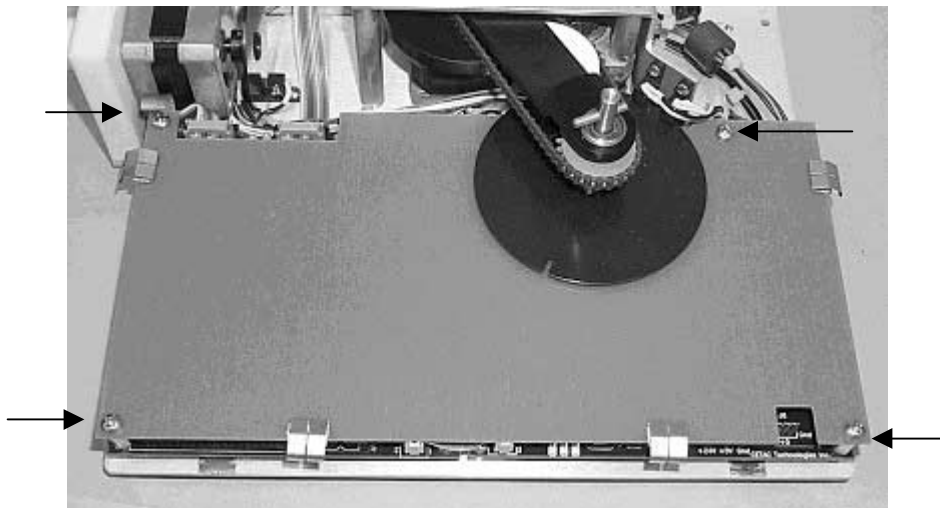


Figure 1-8. View of the inner shield in the ASX-100 Auto-Sampler.

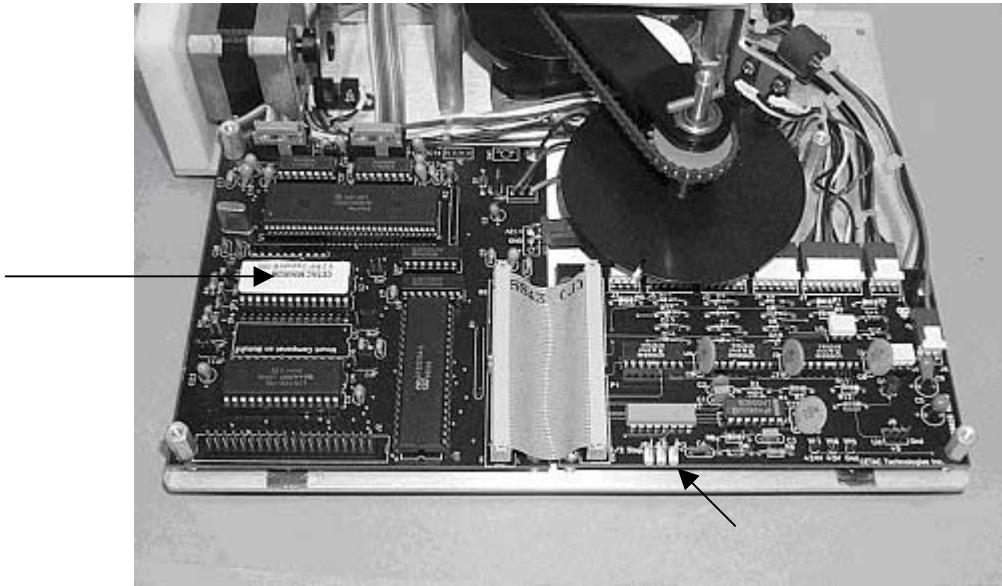


Figure 1-9. View of CPU and I/O boards.

8. Replacement of the firmware chip is now accessible. See Figure 1-9.

Note:

A jumper may need to be added or removed from **JP3**. See Figure 1-9. Please contact CETAC Technologies Customer Service and Support (800-369-2822) or an authorized representative for more information on when this needs to be done.

9. To assemble the unit, attach the inner shield with four corner screws. Attach the ribbon cable and top hood. The I/O panel needs to be pushed in before the top hood is put into place. See Figure 1-10. After the hood is in place tighten the two I/O panel screws and replace the other corner screws. Attach the rotary tray with the plastic nut and the position rack. Lastly, attach the Z-drive assembly with locking nut inside the circle. See Figure 1-11.



Figure 1-10. Back view ASX-100 showing I/O panel.



Figure 1-11. Top view of ASX-100.