



**TELEDYNE**  
**CETAC TECHNOLOGIES**  
Everywhereyoulook™

## **MVX-7100 $\mu$ L Workstation Plug-In** For Agilent MassHunter™ Workstation Software



## **Installation Guide**

Manual Part Number **32-0059-048** Rev 0, April 3, 2017

## **COPYRIGHT**

© 2017 Teledyne Technologies Incorporated.  
All rights reserved.

32-0059-048 Rev 0, April 3, 2017,

Teledyne CETAC Technologies authorizes its customers to reproduce, transmit, or store this document in its entirety, including this page, for the express purpose of installing, operating, or maintaining the product described herein.

Teledyne CETAC Technologies  
Customer Service & Support  
14306 Industrial Road  
Omaha, Nebraska 68144, USA  
Phone (800) 369-2822 (USA only)  
Phone (402) 733-2829  
Fax (402) 733-1932  
E-mail cetacservice@teledyne.com

## **REVISIONS**

Teledyne CETAC Technologies strives to provide the scientific community with an unparalleled combination of effective technology and continuing value. Modular upgrades for existing instruments will continue to be a prime consideration as designs progress.

Teledyne CETAC Technologies reserves the right to revise this document and improve products described herein at any time without notice or obligation.

## **TRADEMARK ACKNOWLEDGEMENTS**

Windows is a registered trademark of Microsoft Corporation in the United States and other countries.

MassHunter is a trademark of Agilent Technologies Inc.

All other marks are the property of their respective owners.

# Contents

<b>1</b>	<b>Introduction</b> .....	<b>4</b>
	Overview.....	4
	Requirements .....	4
	Where to Go for More Information .....	5
<b>2</b>	<b>Setting Up the Hardware</b> .....	<b>6</b>
<b>3</b>	<b>Installing and Configuring the Plug-In</b> .....	<b>7</b>
	Installing the Plug-In.....	7
	Opening the Hardware Configuration Window .....	8
	Configuring the COM Port.....	9
	<i>Determining Which COM Port To Use</i> .....	9
	<i>Configuring the COM Port Number</i> .....	10
	Configuring the Plugin for Your Hardware .....	10
	Using the Plug-In.....	10

# 1 Introduction

---

## Overview

Use the Teledyne CETAC Technologies autosampler plug-in to operate a CETAC MVX-7100  $\mu\text{L}$  workstation with the Agilent MassHunter™ Workstation software.

Without the plug-in, the MVX-7100 workstation must be controlled by the CETAC Workstation software. With the plug-in, however, you do *not* need to use the CETAC Workstation software.

The Teledyne CETAC Technologies MVX-7100  $\mu\text{L}$  workstation provides sample handling (sample preparation and sample introduction capability) for sample volumes down to 5  $\mu\text{L}$  for ICP-MS instrumentation. The syringe-driven sample introduction and subsequent rinse cycles allow for stable low-flow applications with low detection limits. Syringe aliquot control combined with flow injection allows for accurate sample volumes to be handled with superior washout. The MVX-7100  $\mu\text{L}$  workstation utilizes a non-metallic liquid-facing flow path to minimize system background and provide low detection limits.

## Requirements

Before you use this software, you need:

- An Agilent ICP-MS (installed and operating).
- Agilent MassHunter™ Workstation software version 4.3 or later.
- A CETAC MVX-7100  $\mu\text{L}$  workstation (with all of the accessory modules you plan to use installed).
- The CETAC MVX-7100 software CD.

---

## Where to Go for More Information

In addition to this manual, you can refer to the following resources:

- The CETAC *MVX-7100  $\mu$ L Workstation Operator's Manual* provides information about installing and maintaining the MVX-7100  $\mu$ L workstation.
- Teledyne CETAC Technologies Customer Service and Support:  
Phone: 1 (800) 369-2822 (USA only)  
1 (402) 733-2829  
Fax: 1 (402) 733-1932  
E-mail: [cetacservice@teledyne.com](mailto:cetacservice@teledyne.com)

## 2 Setting Up the Hardware

You will need to install the plug-in before you can complete setting up the MVX-7100  $\mu\text{L}$  workstation. This is because the syringes pumps need to be at the 1/2 position in order to install the syringe barrels. If necessary, you can use the Direct Controls in the plug-in to move the syringe pumps to the proper position.

The CETAC *MVX-7100  $\mu\text{L}$  Workstation Operator's Manual* provides information about installing the MVX-7100  $\mu\text{L}$  workstation.

# 3 Installing and Configuring the Plug-In

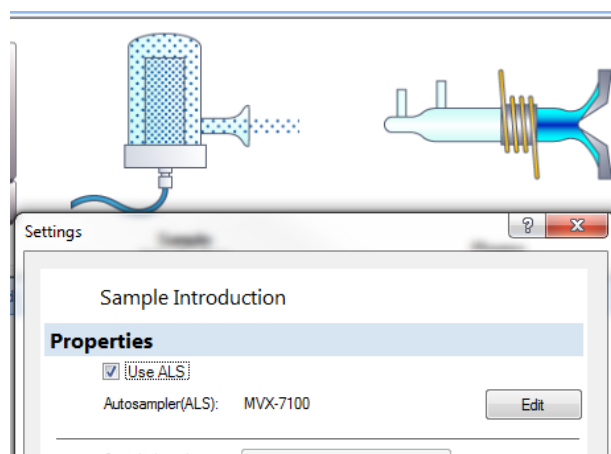
Before you can create or run any methods with the MVX-7100 workstation, you must install the plug-in and configure it for your hardware. The plug-in reads the configuration information from when it is started.

Under **Mainframe Properties>External Device**, there is a listing for the MVX-7100. Nothing there needs to be changed. All settings are in the plug-in's hardware configuration window.

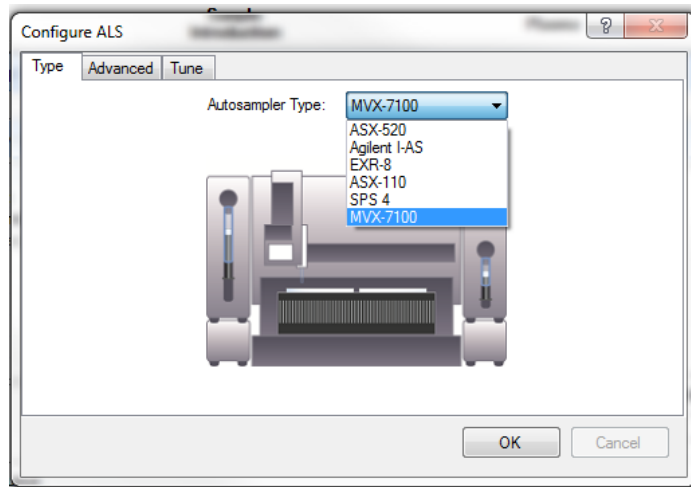
---

## Installing the Plug-In

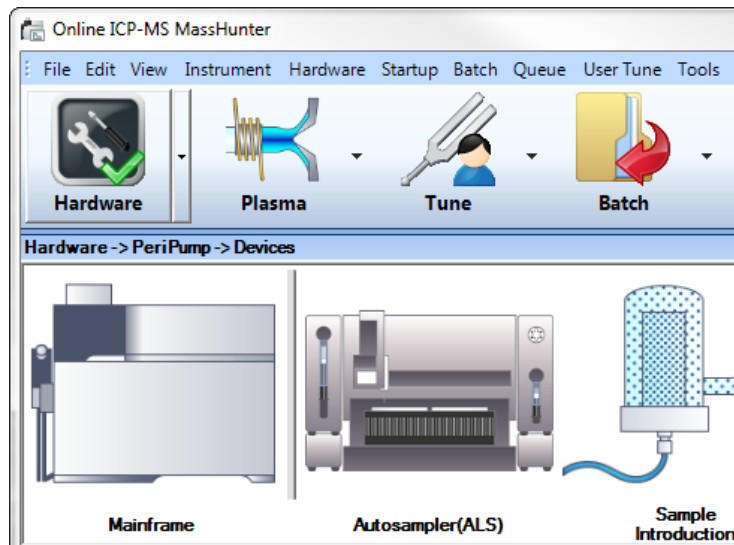
- 1 Run the installer from the MVX-7100 software CD.
- 2 Start the MassHunter software.
- 3 Under **Sample Introduction**, enable **Use ALS**.



- 4 Under **Autosampler(ALS)**, click **Properties** and set the autosampler type to MVX-7100.



The autosampler will appear in the list of hardware:



If the plug-in does not appear in MassHunter, check that the MassHunter software was installed in the default location.

## Opening the Hardware Configuration Window

There are two ways to open the configuration window:

- 1 Click the Autosampler(ALS) and choose **MVX Settings...**  
or
- 2 In the plug-in window, select **Settings & Info > Configuration > MVX Settings...**



## Configuring the COM Port

The plug-in will need to know which COM port is connected to the autosampler.

### Determining Which COM Port To Use

If you are using a USB connection, the COM port numbers were assigned by the Windows when you connected the USB cables for the first time. Ideally, the port numbers were written down at that time.

If you do not know which port numbers were assigned, you can use the Windows Device Manager to distinguish the port numbers:

- 1 Connect the USB cables between the computer and the autosampler, and turn them on.
- 2 Open the **Windows Device Manager**. The quickest way to do this is to click the Windows Start button and enter “device manager” in the search field.
- 3 In Device Manager, click **Ports (COM & LPT)**. You will see a list of all of the COM port numbers which have been assigned.

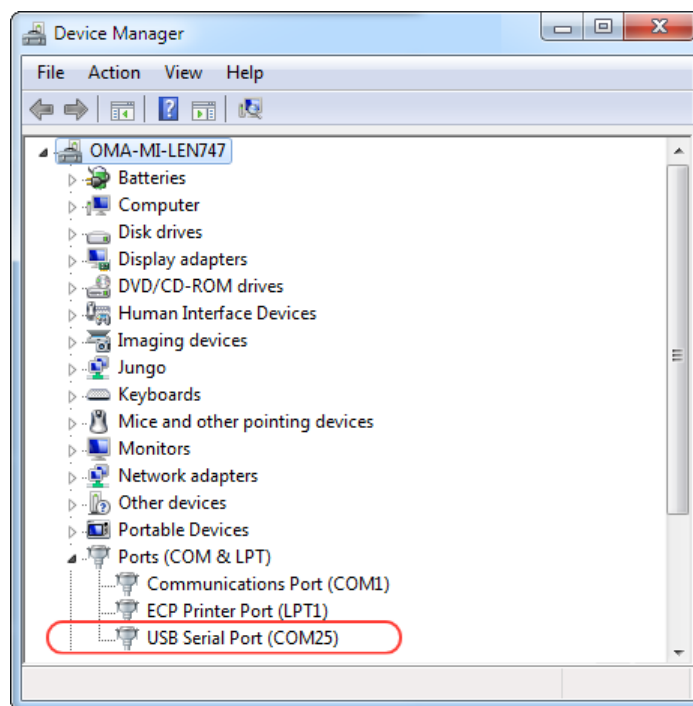


FIGURE 3-1 COM Port Assigned to a USB Port in Device Manager

- 4 Unplug the USB cable from the autosampler.
- 5 Note which COM port disappears from the list. This is the port number of the autosampler.
- 6 Plug the USB cable back in.

## Configuring the COM Port Number

- 1 In the hardware configuration window, click the **COM Port** tab.
- 2 Select the COM port number from the list.
- 3 Enable **Auto Connect**.

When Auto Connect is enabled, the plug-in will automatically connect to the chosen COM port every time it is started.

If Auto Connect is not enabled, you will need to set the COM port every time you run the plug-in.

---

## Configuring the Plugin for Your Hardware

After you change any of the hardware configuration settings, exit and restart the MassHunter software.

Before you can create or run any methods, you must configure the plug-in so that it knows what hardware is present. The plug-in reads the configuration information when it is started. See the plug-in help for more information.

---

## Using the Plug-In

Click the help button in the plug-in for instructions on configuring the plug-in, creating methods, and running batches of samples.

For information on using the plug-in, start MassHunter and select **Settings & Info>General>Help**.

