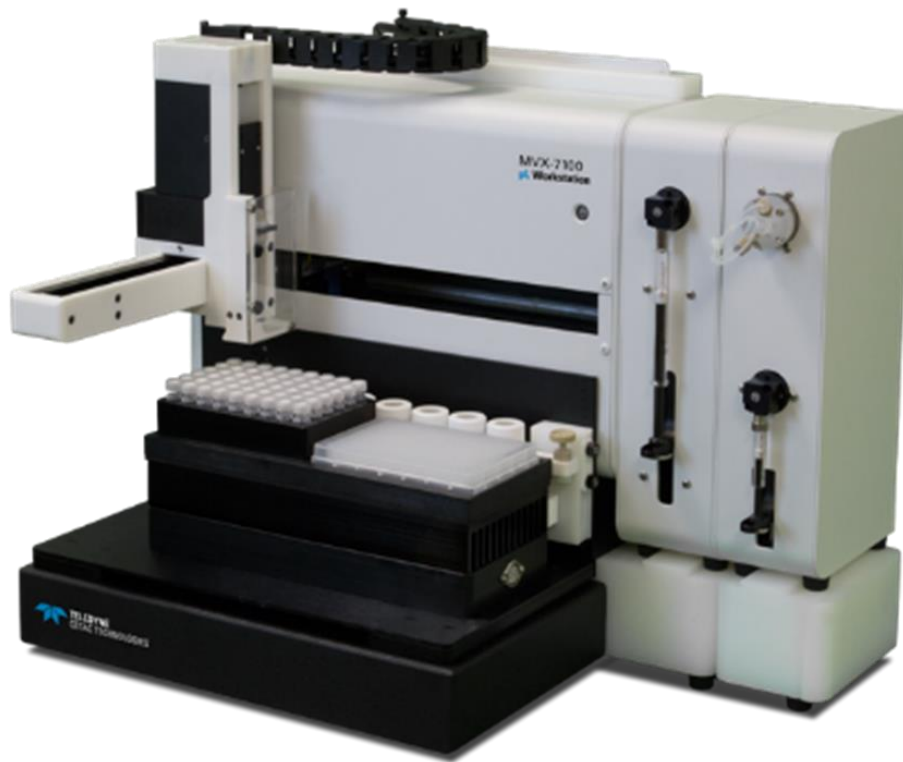


## MVX-7100 $\mu$ L Workstation



## ACCESSORIES, CONSUMABLE PARTS AND REPAIR PARTS CATALOG

# Contents

## Accessories and Consumable Parts

### 1. Sample Flow Path Components

- Sample Probes
- Tubing, Fittings and Ferrules
- Syringes and Syringe Pump Switching Valves
- Combination Kits

### 2. Power and Communication Components

- Power Supplies
- Communication Cables and Power Cords

### 3. Sample Containment Options

- Sample Racks and Sample Vials
- Well Plates

### 4. Nebuliser Options

- Concentric nebulisers
- DS-5 Total consumption nebuliser

### 5. MVX-7100 Automation Components

- Microtitre Tray and Rack Adapters
- Replacement Hardware Components

### 6. Optional Extra Components

- Peltier Rack Module
- Syringe Pump Modules

## Repair Components



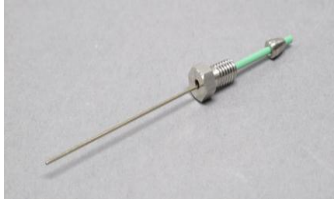


The 'Repair Components' section describes MVX-7100  $\mu$ L Workstation product components that are intended to be purchased as part of a repair procedure in conjunction with the Teledyne CETAC Technologies service department.

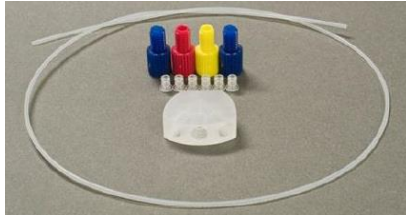
## Ordering

Contact details for the sales and service departments at Teledyne CETAC Technologies are provided in this section.

## Accessories and Consumable Parts

### 1. Sample Flow Path Components

	<p><b>Standard Quartz Sample Probe</b></p> <p>0.018" ID, 0.028" OD Length: 3 Inches</p> <p>For trace element analysis with ICP-MS</p>	<p><b>SP7536</b></p>
	<p><b>Capillary Quartz Sample Probe</b></p> <p>0.010" ID, 0.028" OD Length: 3 Inches</p> <p>For trace element analysis with ICP-MS (primarily for use with 384 well plates)</p>	<p><b>SP7508</b></p>
	<p><b>Stainless Steel Needle Assembly</b></p> <p>For analysis with chromatography instruments. <b>Not</b> suitable for trace element analysis with ICP-MS.</p>	<p><b>SP6955</b></p>
	<p><b>Sample Loop for VSM 6 Port Switching Valve</b></p> <p>Capacity: 500 µL</p>	<p><b>SP7533</b></p>
	<p><b>Syringe Buffer Line (VSM Switching Valve to PSD4 Syringe)</b></p> <p>Capacity: 1.25 mL</p> <p>The buffer line ensures that sample does not come into contact with the PSD4 syringe.</p>	<p><b>SP7534</b></p>
<p><b>No Image</b></p>	<p><b>Sample Introduction Tubing/Fittings/Ferrule Kit</b></p> <p><b>Kit Includes:</b>            Sample Uptake Line (0.8 mm ID, 30 In Long)            Carrier Solution Line (0.8 mm ID, 47.5 In Long)            Carrier/Rinse Uptake Line (x 2)            Fitting/Ferrule for Carrier Solution Line            Fittings/Ferrules for Carrier/Rinse Uptake Line            Fittings/Ferrules for VSM 6 Port Valve (x 4)</p>	<p><b>32-0513-044</b></p>



---

**Internal Standard Addition Mixing Tee Kit****SP6686****Kit Includes:**

Connectors, CTFE (x 4)  
Ferrules, CTFE (x 6)  
Mixing Tee, CTFE  
PFA Tubing (1 mm ID, 24 In Long)



---

**3 Way Syringe Switching Valve, CTFE/PEEK****32-0494-050**

Compatible with both PFA/PEEK and Borosilicate/PEEK type syringes. For trace element analysis with ICP-MS. Suitable for analysis with hydrofluoric acid applications.



---

**Half-Height Syringe (PSD4), PFA/PEEK****32-0495-031**

Capacity: 1.25 mL

For trace element analysis with ICP-MS. Suitable for analysis with hydrofluoric acid applications.



---

**Full-Height Syringe (PSD6), PFA/PEEK**

Capacity: 500  $\mu$ L

**32-0521-031**

Capacity: 2.5 mL

**32-0496-031**

For trace element analysis with ICP-MS. Suitable for analysis with hydrofluoric acid applications.



---

**Half Height Syringe (PSD4), Borosilicate/PEEK****32-0543-031**

Capacity: 1.25 mL

For trace element analysis with ICP-MS and analysis with chromatography instruments. Suitable for organic solvent matrix applications. **Not** suitable for hydrofluoric acid applications.



---

**Full Height Syringe (PSD6), Borosilicate/PEEK**

Capacity: 500  $\mu$ L

**32-0545-031**

Capacity: 2.5 mL

**32-0544-031**

For trace element analysis with ICP-MS and analysis with chromatography instruments. Suitable for organic solvent matrix applications. **Not** suitable for hydrofluoric acid applications.

---

## 2. Power and Communication Components



### 4-Channel Power Supply (300 W)

PRP-99-0001

The 4-Channel, 300 W, Power Supply is the standard power/communications supply for the MVX-7100 and has **one** unused channel that may be used to add **one** extra module such as a peltier rack module for temperature control or an additional syringe pump module for online incorporation of an internal standard or for online sample dilution.



### 8-Channel Power Supply (600 W)

PRP-99-0002

The 8-Channel, 600 W, Power Supply is an alternative power/communications supply for the MVX-7100 and has **five** unused channels that may be used to add up to **five** extra modules such as a peltier rack module for temperature control or an additional syringe pump module for online incorporation of an internal standard or for online sample dilution (in any combination).



### 24-Volt Power Supply

SP6103

### Power Cords



Type B (NEMA 5-15, IEC 60906-2, 100-127 V)  
Compatible in USA, Canada, Japan, Mexico

SP5003

Type F (CEE 7/7, 220-240 V)  
Compatible in Europe and Russia

SP5004

Type G (BS 1363, 220-240 V)  
Compatible in UK and ROI

SP5005

Type I (AS/NZS 3112, 220-240 V)  
Compatible in Australia, China, New Zealand,  
Argentina

SP6772



**RS232 Cables**

Female/Female connections  
Length: 0.9 m (3 ft)  
Length: 3 m (9.8 ft)

**SP6980**  
**SP7441**

For connection between the MVX-7100 automation and the 4 or 8 channel (300 W or 600 W) power supply.

---



**USB Cable**

**SP6375**

A/B Type Cable  
Length: 3 m

For connection between the MVX-7100 automation and the operating PC.

---



**DIN Communication Cables (x 2)**

**SP6641**

For power and communication connection between 4 or 8 channel (300 W or 600 W) power supply and the MVX-7100 automation, syringe pump modules, the valve syringe module and peltier rack module.

One cable is required for connection between the power supply and each module and the automation.

---

### 3. Sample Containment Options

	<b>Sample Vials with Pierceable Septa</b>	<b>SP7503</b>
	Capacity: 2 mL (200/kit) Sample Vials  Capacity: 20 mL (6/kit) Extra Reagent Vials	<b>SP7502</b>
	<b>VT-54 Sample Vial Rack</b> 54 Position Rack for 2 mL Sample Vials	<b>SP6835</b>
	<b>48 Position Rack</b>  48 Position Rack for Micro-Centrifuge Tubes/Vials.	<b>391447</b>
	Rack adapter plate for MVX-7100 $\mu$ L Workstation.  48 position rack with 0.5 mL Teflon vials.	<b>SP6324</b>
	<b>96 Well Microtitre Plates</b>  Capacity: 340 $\mu$ L (x 5)	<b>SP7504</b>
	<b>96 Well Microtitre Plate Sealing Film</b>  5 x Films provided per order.  Pierceable films for sealing 96 well microtitre plates and inhibiting sample evaporation.	<b>SP7506</b>
	<b>384 Well Microtitre Plates</b>  Capacity: 58 $\mu$ L (x 5)	<b>SP7505</b>

## 4. Nebuliser Options



### C-Flow Nebulisers

50 $\mu\text{L min}^{-1}$ PFA Nebuliser	<b>450505</b>
100 $\mu\text{L min}^{-1}$ PFA Nebuliser	<b>450506</b>
200 $\mu\text{L min}^{-1}$ PFA Nebuliser	<b>450507</b>



### Glass Concentric Nebulizers

100 $\mu\text{L min}^{-1}$ Nebuliser	<b>SP8135</b>
250 $\mu\text{L min}^{-1}$ Nebuliser	<b>SP8134</b>
500 $\mu\text{L min}^{-1}$ Nebuliser	<b>SP8158</b>



### Spare Uptake Lines for Nebulizer

100 $\mu\text{L min}^{-1}$ Uptake Line	<b>SP8138</b>
250 $\mu\text{L min}^{-1}$ Uptake Line	<b>SP8137</b>
400/500 $\mu\text{L min}^{-1}$ Uptake Line	<b>SP8136</b>



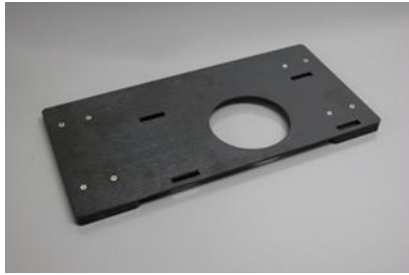
### DS-5 Microflow Concentric Nebulizer

**DS5-99-0001**

Total consumption nebuliser for sample introduction flow rates up to a maximum of 7  $\mu\text{L min}^{-1}$ .



## 5. MVX-7100 Automation Components



**Rack Adapter Plate**

**SP7293**



**Microtitre Tray Adaptor (2 Position)**

**SP7507**

Standard Adaptor for two VT54 sample vial racks, two 48 position racks or two microtitre well plates (or a combination of any of these).



**Z-Axis Drive Assembly**

**SP7495**



**Accessory Mounting Blocks**

External Mounting Block

**SP7461**

Internal Mounting Block

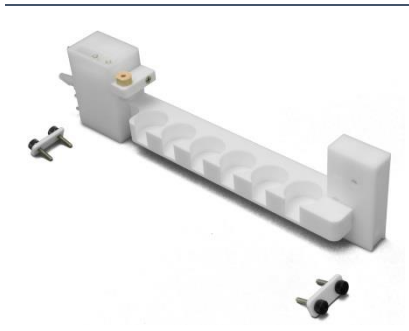
**SP7497**

Mounting blocks for syringe pump and valve syringe modules (SPM's and VSM's).



**Sample Needle/Probe Guard Assembly**

**SP7498**



**Rinse Station Assembly**

**SP7499**

Includes the rinse station, the six additional reagent vial positions and the mounting screws.



**Sample Needle/Probe Guide**  
(Accessory or Service)

**SP7501**



**Peristaltic Pump Motor Kit**

**SP7500**

2-channel peristaltic pump for charging the dual rinse station. Peristaltic pump tubing not included.



**2 Litre Carrier Solution/Rinse Solution Bottle**

**SP6435**

---

## 6. Optional Extra Components

---



**Peltier Rack Module**

**PRM-99-0003**

Module that allows temperature control of samples between 4°C and 40°C.

---



**Syringe Pump Module (SPM), SPM-700+**

**SPM-99-0004**



**Valve Syringe Module (VSM), VSM-700**

**VSM-99-0001**

---

## Repair Components



**6 Port Valve Assembly**

**SP7509**



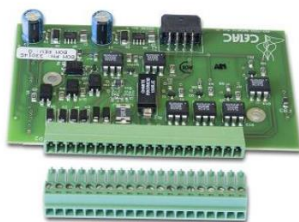
**Short Stroke Syringe Pump, VSM-700**

**SP7510**



**Tall Stroke Syringe Pump, SPM-700+**

**SP7511**



**I/O Card**

**SP7345**

For ASX-7X00HR Automation. Includes rear panel (not shown).



**Carriage Stepper Ribbon Cable E-Chain**

**SP7382**

E-Chain assembly for ASX-7100HR/ASX-7200HR automation.



**Internal Shield**

**SP7362**

Internal shield for ASX-7100HR/ASX-7200HR automation.

---



**Fuse Kit**

Fuses (x 5), 5 mm x 20 mm.

5A fuses for 4 channel (300 W) power supply (PRP-99-0001).

**SP5236**

10A fuses for 8 channel (600 W) power supply (PRP-99-0002).

**SP7433**

---



**MVX-7100 µL Workstation Top Cover**

**SP7496**

---

## Ordering

To place an order or make enquiries as to any of the parts or accessories in this catalogue, or Teledyne CETAC Technologies products, please contact the Sales Department via the following details or access our e-commerce page at the Teledyne CETAC Technologies website:

### **Teledyne CETAC Technologies Sales Department**

14306 Industrial Road

Omaha, Nebraska 68144, USA

Telephone (Inside USA): 800 369 2822

Telephone (Outside USA): +1 402 733 2829

[cetacsales@teledyne.com](mailto:cetacsales@teledyne.com)

[www.teledynecetac.com](http://www.teledynecetac.com)

For enquiries as to service or repairs, please contact our Service Department via the following page at our website:

[www.teledynecetac.com/site-support/Pages/Global.aspx](http://www.teledynecetac.com/site-support/Pages/Global.aspx)

